

# ALPHABETS

## CORRECTIONS AND CLARIFICATIONS

Design Area:

**110 Stitches Wide X 344 Stitches Tall**  
 (Does **NOT** include 4-sided stitch hemstitched area)

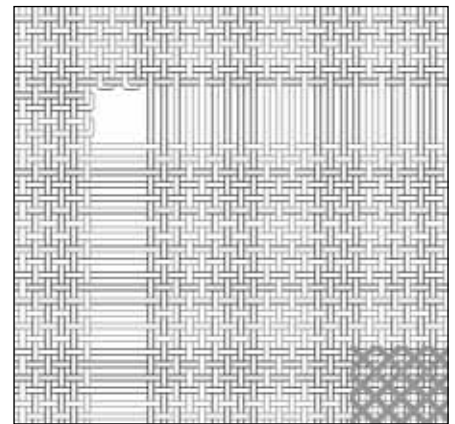
**134 Stitches Wide X 368 Stitches Tall**  
 (To outside edged of hemstitching)

WE RECOMMEND F: 7 8A >>AI ;@9 834D,5 5GF 8AD 8D3? ;@9 AD 47>>BG>> 8,@,E :  
 28 Count "Lambswool" Linen cut to 16" x 3\$"

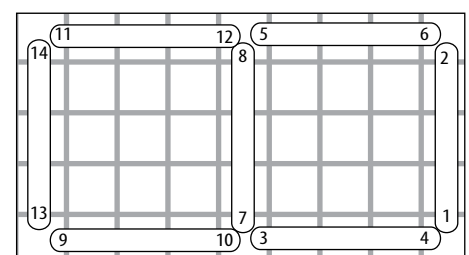
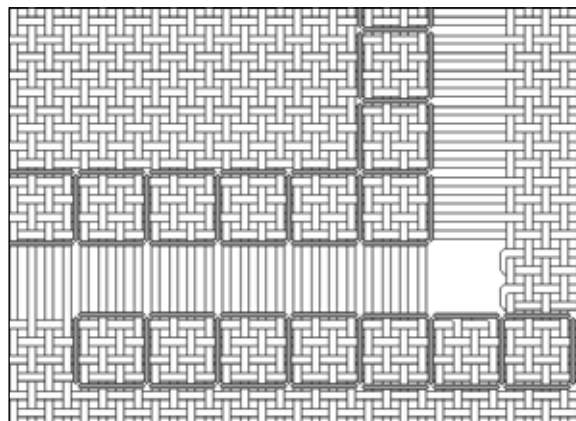
### DRAWN THREAD FOUR SIDED STITCH BORDER

**STEP 1** - From the top center of the design area count up 16 linen threads. Cut the next four (17th, 18th, 19th and 20th) linen threads. Un-weave the left side of the 17th thread to about 1/2" from the raw edge of the left side of the linen. Take this linen thread to back of work and trim to about 1/2". Un-weave the left side of the 18th thread to at least 40 vertical threads beyond the left side of the design area. Do not trim. Repeat this process with the next two cut linen threads and then repeat with the cut threads on the right side. Repeat this entire proces on the other 3 sides of the border area.

**STEP 2** - Thread each untrimmed, loose linen threads into a tapestry needle and re-weave them into the spaces left open by threads that were removed, up and one thread beyond where those threads were taken to the back of work (see illustration at right). Take these threads to the back of the work. When all withdrawing and re-weaving of threads is completed, the corners of your work should look like the illustration at right.

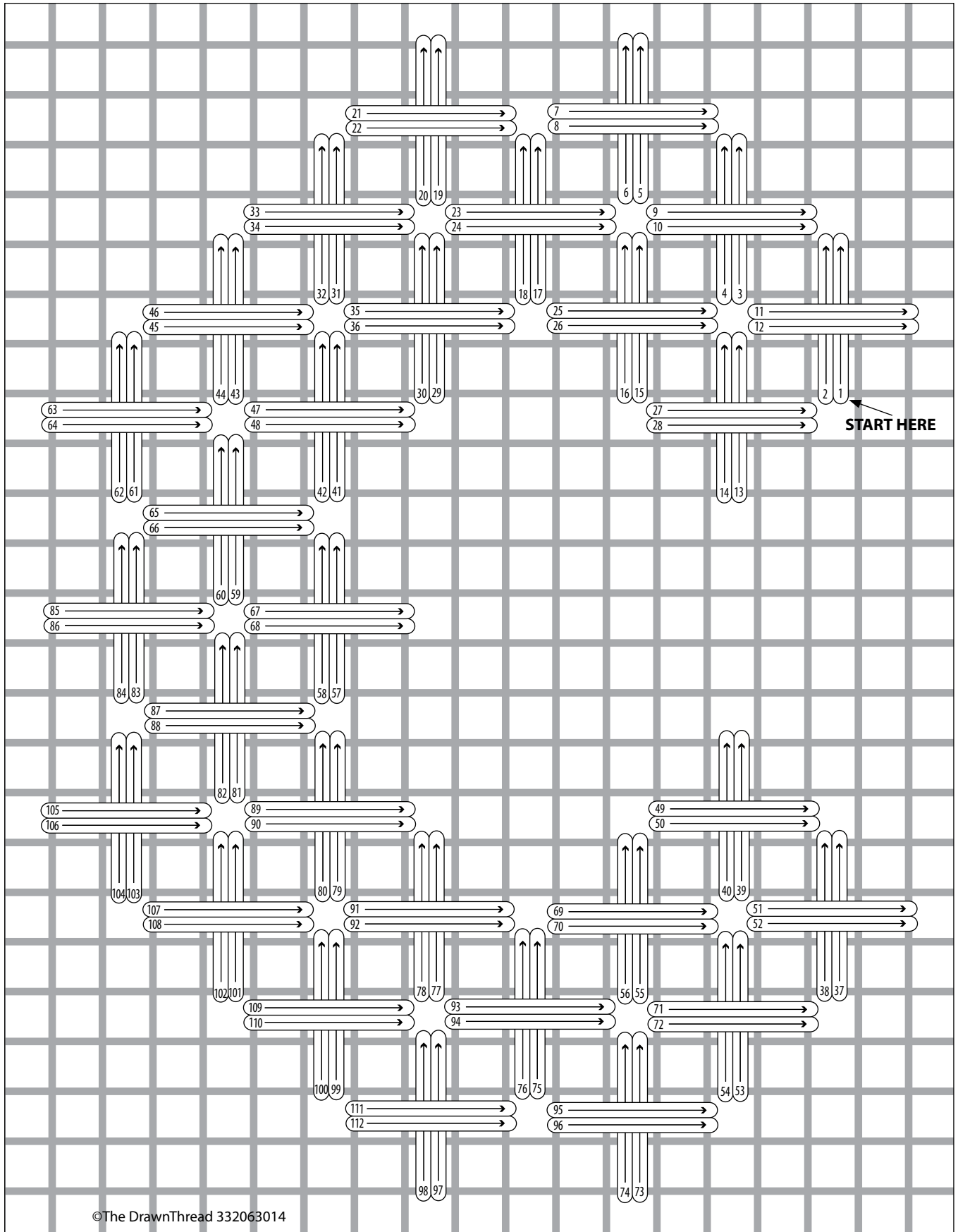


**STEP 3** - Work four-sided stitches around the inside edges of the drawn thread area, then around the outside area, then around the outside using 1 strand of Soie 100/3 in 211, cream (see illustration at right). Make the four-sided stitches from right to left following stitch diagram at far right.



Four-Sided Stitch

Motif 9 - Pulled Cross - 1 strand Soie 100/3/211, Cream - Step 3, Letter C



©The DrawnThread 332063014

## FINISHING FOR HANGING WITH BELLPULL HARDWARE

**STEP 1** - At the top center of the piece, count up 60 linen threads from the top center four-sided stitch. Clip and completely remove the 61st horizontal thread. This is your trim line. Trim excess fabric by cutting along the space left by the removal of this thread. Repeat this process on the remaining three sides of the fabric.

**STEP 2** - From the edge of the trimmed fabric, count in 8 threads. Fold "in the ditch" between the 8th and 9th threads and gently press. This is fold line 1. Count down 28 threads from this fold and fold in the ditch between the 28th and 29th threads and gently press again. This is fold line 2. The bottom edge of this hem should now meet up with the top of the area where the threads were removed (the bottom edge of the outside row of four-sided stitches). Do this on all four sides of the fabric. Do not worry about the corners right now. You will be unfolding and mitering the corners in the next step.

**STEP 3** - Unfold all folds made in step 3. Fold the corners toward the back of the work at a 45 degree angle, so that the corner point of fold line 2 is at the exact center edge of this fold (see illustration at right). Press gently with a warm iron then trim this corner to about 3/8".

