

LOVE LETTERS

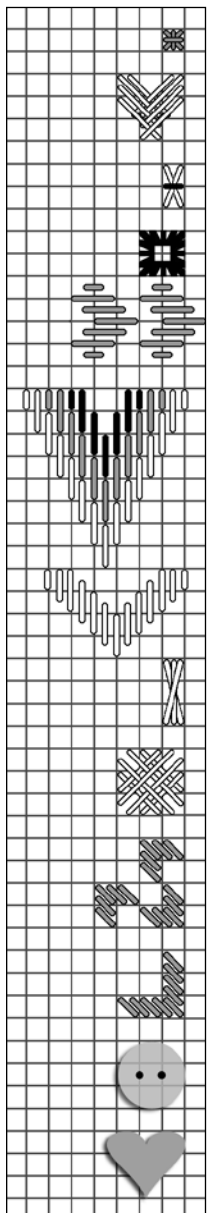
46 STITCHES WIDE X 158 STITCHES LONG

GENERAL DIRECTIONS

The model for "Love Letters" was stitched on 32 count "Antique Ivory" Belfast Linen using 1 ply of silk over two linen threads unless otherwise specified in the Stitch/Color key. All squares on the chart equal two threads of linen. Stitch diagrams show actual threads.

COLOR / STITCH KEY

	Needlepoint Silk 715	Bordeaux Dark	Cross Stitch	1 ply
	Needlepoint Silk 713	Bordeaux Medium	Cross Stitch	1 ply
	Dinky Dyes 091	Jarrah	Cross Stitch	1 ply
	Needlepoint Silk 931	Mauve Medium	Cross Stitch	1 ply
	Dinky Dyes 192	Mocha Mauve	Cross Stitch	1 ply
	Dinky Dyes 136	Sea Grass	Cross Stitch	1 ply
	Needlepoint Silk 341	Pale Green	Cross Stitch	1 ply
	Dinky Dyes 181	Antique Mauve	Cross Stitch Over 1 linen thread	1 ply
	Needlepoint Silk 715	Bordeaux Dark	Cross Stitch Over 1 linen thread	1 ply
	Dinky Dyes 192	Mocha Mauve	Web Stitch Heart	1 ply
	Dinky Dyes 192	Mocha Mauve	Pulled Upright Cross	1 ply
	Needlepoint Silk 713	Bordeaux Medium	Crossed Elongated Cross	1 ply
	Needlepoint Silk 713	Bordeaux Medium	Jessica Stitch	1 ply
	Dinky Dyes 192	Mocha Mauve	Woven Heart	1 ply
	Dinky Dyes 136	Sea Grass	Leaf Stitch	1 ply
	Dinky Dyes 136	Sea Grass	Rice Stitch	1 ply
	Dinky Dyes 192	Mocha Mauve	Rhodes Heart	1 ply
	Dinky Dyes 181	Antique Mauve	Double Diagonal Satin Heart	2 ply
	Dinky Dyes 192	Mocha Mauve	Double Four-Sided Stitch	1 ply
	Dinky Dyes 192	Mocha Mauve	Satin Stitch Heart	1 ply
	Needlepoint Silk 931	Medium Mauve	Overlapping Cross	1 ply
	Dinky Dyes 091	Jarrah	Large Herringbone Heart	1 ply
	Dinky Dyes 181	Antique Mauve	Elongated Smyrna Cross	1 ply

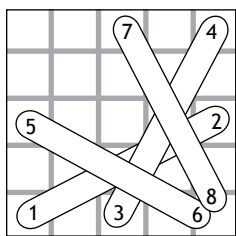


Dinky Dyes 091	Jarrah	Smyrna Cross	1 ply
Dinky Dyes 192	Mocha Mauve	Small Herringbone Heart	1 ply
See Stitch Diagram for Colors		Barred Elongated Cross	1 ply
Dinky Dyes 192	Mocha Mauve	Eyelet	1 ply
Dinky Dyes 091	Jarrah	Darned Hearts	1 ply
See Stitch Diagram for Colors		Bargello Heart	2 ply
Dinky Dyes 192	Mocha Mauve	Wide Satin Stitch Heart	2 ply
Dinky Dyes 192	Mocha Mauve	Long Half Rhodes	1 ply
Dinky Dyes 091	Jarrah	Herringbone Cross	1 ply
Dinky Dyes 091	Jarrah	Alternating Diagonal Satin Stitch Hearts	2 ply
Dinky Dyes 091	Jarrah	Diagonal Satin Stitch Heart	2 ply
		Sew on 4mm Pale Violet Button using 1 ply Dinky Dyes 192, Mocha Mauve	
		Sew on 4mm Pink Jade Heart using 1 ply Dinky Dyes 192, Mocha Mauve	

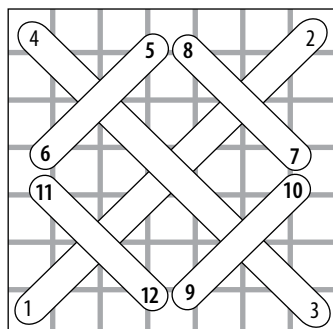
Back Stitching

All Back Stitching worked in 1 ply Dinky Dyes 136 - Sea Grass

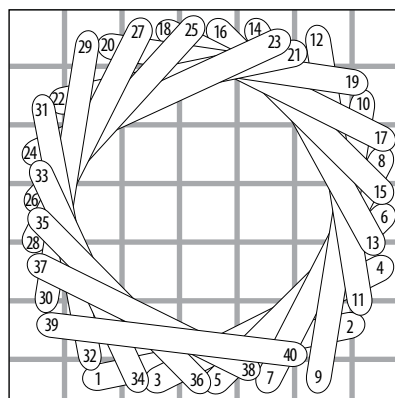
STITCH DIAGRAMS:



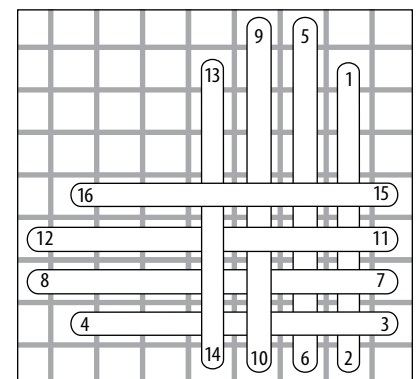
Crossed Elongated Cross



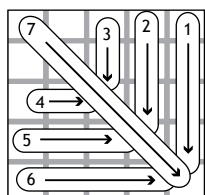
Rice Stitch



Jessica Stitch



Woven Heart



Leaf Stitch